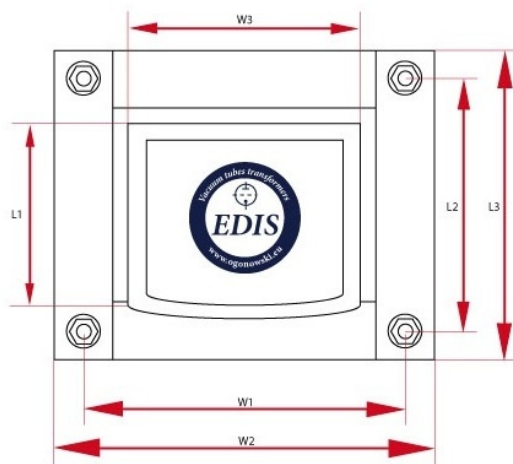
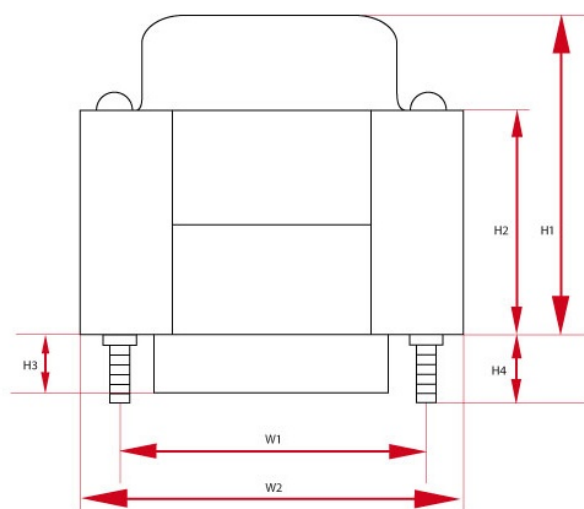


LO PP40-G2

Caption

weight	approximate weight	R_o	load resistance
$k_{n:n}$	transmission	L_{aa}	inductance of the anode-anode, $f=120\text{Hz}$
Z_{aa}	anode-anode impedance	f_{\max}	maximum frequency
R_{aa}	resistance of the anode-anode	price	price
sizes	overall dimensions	P_{\max}	maximum power
UL	peel off the ultra-linear	I_{\max}	maximum current
f_{\min}	minimum frequency	core	core type

Specyfikacje



Push Pull - PP40-G2 - wersja z jednym dekielkiem							
P_{\max}	Z_a	I_{\max}	R_{aa}	UL	$k_{n:n}$	R_o	L_a
40 W	8 Ω	200 mA	8000 Ω	-	-	4 and 8 and 16 Ω	-
f_{\min}	f_{\max}	Core	Size W	Size H	Size L	Weight	Count
		EI66/32	W1 -- mm W2 -- mm W3 -- mm	H1 -- mm H2 -- mm	L1 -- mm L2 -- mm L3 -- mm L4 -- mm	1 kG	1