

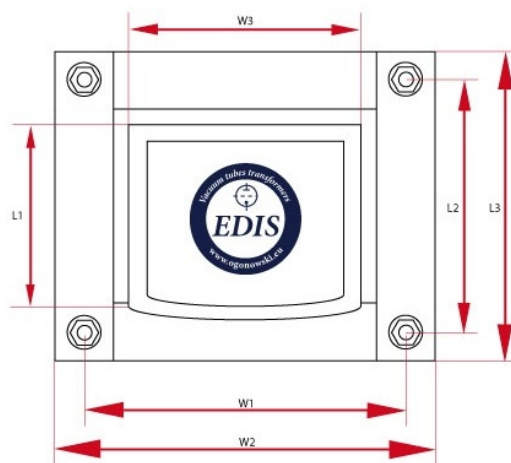
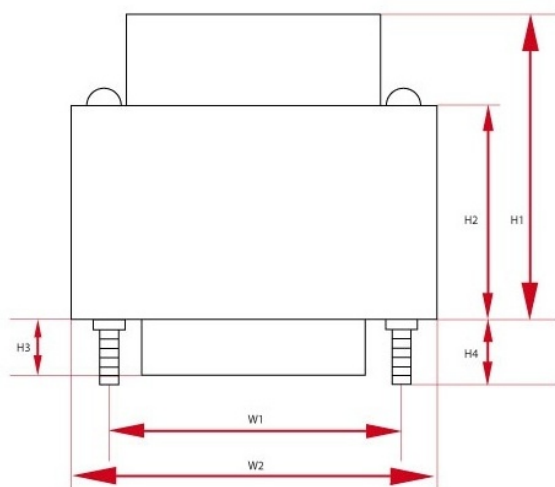
## LO PP60-1

The transformer is made on the annealed cores, thickness of laminations 0.3 mm .

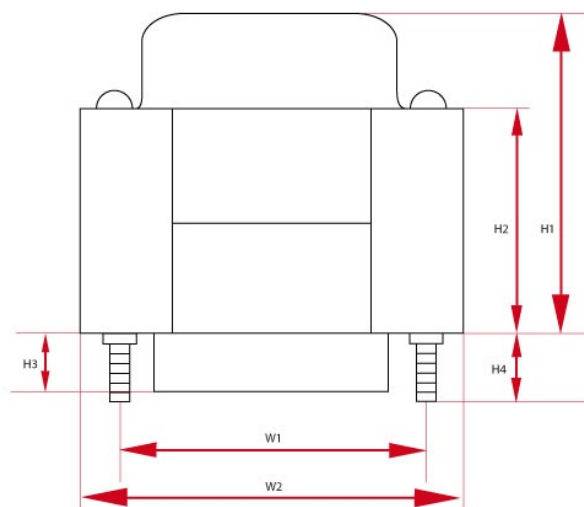
## Caption

$k_{n:n}$	transmission	$L_{aa}$	inductance of the anode-anode, $f=120\text{Hz}$
price	price	$f_{\min}$	minimum frequency
sizes	overall dimensions	weight	approximate weight
$P_{\max}$	maximum power	$I_{\max}$	maximum current
UL	peel off the ultra-linear	$R_o$	load resistance
core	core type	$Z_{aa}$	anode-anode impedance
$R_{aa}$	resistance of the anode-anode	$f_{\max}$	maximum frequency

## Specyfikacje



Push Pull - LO PP60-1 - wersja z jednym dekielkiem (PL)							
$P_{\max}$	$Z_a$	$I_{\max}$	$R_{aa}$	UL	$k_{n:n}$	$R_o$	$L_a$
60 W	6600 $\Omega$	200 mA	155 $\Omega$	43 %	40.6 : 1, 28.7 : 1	4 and 8 $\Omega$	47 H
$f_{\min}$	$f_{\max}$	Core	Size W	Size H	Size L	Weight	Count
10Hz @ -3dB 20Hz @ +/-1dB	60kHz @ -3dB 20kHz @ +/-1dB	EI96/59	W1 - 110 mm W2 - 110 mm W3 - 110 mm	H1 - 110 mm H2 - 110 mm	L1 - 110 mm L2 - 110 mm L3 - 110 mm L4 - 110 mm	3.5 kG	1
Price							
1-5 units		5+ units		10+ units		25+ units	
121.0 USD		115.0 USD		109.0 USD		103.0 USD	



Push Pull - LO PP60-1 - wersja z jednym dekielkiem (DE)

$P_{max}$	$Z_a$	$I_{max}$	$R_{aa}$	UL	$k_{n:n}$	$R_o$	$L_a$
60 W	6600 $\Omega$	200 mA	155 $\Omega$	43 %	40.6 : 1, 28.7 : 1	4 and 8 $\Omega$	47 H
$f_{min}$	$f_{max}$	Core	Size W	Size H	Size L	Weight	Count
10Hz @ -3dB 20Hz @ +/-1dB	60kHz @ -3dB 20kHz @ +/-1dB	EI96/59	W1 - 110 mm W2 - 110 mm W3 - 110 mm	H1 - 110 mm H2 - 110 mm	L1 - 110 mm L2 - 110 mm L3 - 110 mm L4 - 110 mm	3.5 kG	1
Price							
1-5 units		5+ units		10+ units		25+ units	
121.0 USD		115.0 USD		109.0 USD		103.0 USD	