

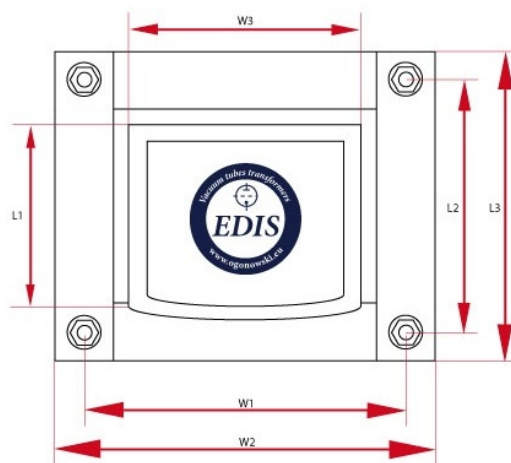
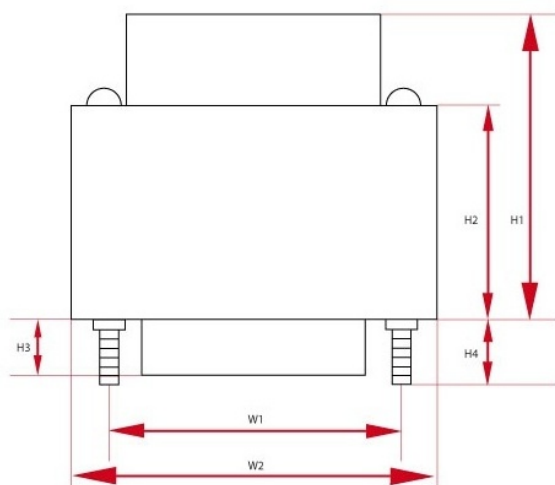
LO PP80-1

The transformer is made on the annealed cores, thickness of laminations 0.3 mm .

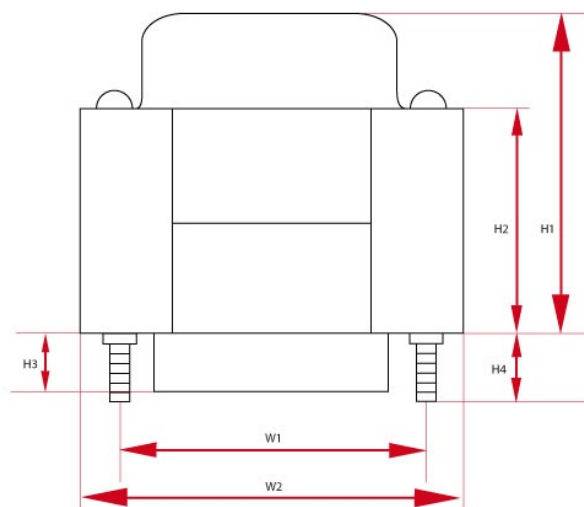
Caption

$k_{n:n}$	transmission	L_{aa}	inductance of the anode-anode, $f=120\text{Hz}$
price	price	f_{\min}	minimum frequency
sizes	overall dimensions	weight	approximate weight
P_{\max}	maximum power	I_{\max}	maximum current
UL	peel off the ultra-linear	R_o	load resistance
core	core type	Z_{aa}	anode-anode impedance
R_{aa}	resistance of the anode-anode	f_{\max}	maximum frequency

Specyfikacje



Push Pull - LO PP80-1 - wersja z jednym dekielkiem (PL)							
P_{\max}	Z_a	I_{\max}	R_{aa}	UL	$k_{n:n}$	R_o	L_a
80 W	4000 Ω	250 mA	120 Ω	43 %	31.6 : 1, 22.3 : 1	4 and 8 Ω	35 H
f_{\min}	f_{\max}	Core	Size W	Size H	Size L	Weight	Count
10Hz @ -3dB	60kHz @ -3dB	EI96/59	W1 - 110 mm W2 - 110 mm W3 - 110 mm	H1 - 110 mm H2 - 110 mm	L1 - 110 mm L2 - 110 mm L3 - 110 mm L4 - 110 mm	3.5 kG	1
Price							
1-5 units		5+ units		10+ units		25+ units	
121.0 USD		115.0 USD		109.0 USD		103.0 USD	



Push Pull - LO PP80-1 - wersja z jednym dekielkiem (DE)

P_{max}	Z_a	I_{max}	R_{aa}	UL	$k_{n:n}$	R_o	L_a
80 W	4000 Ω	250 mA	120 Ω	43 %	31.6 : 1, 22.3 : 1	4 and 8 Ω	35 H
f_{min}	f_{max}	Core	Size W	Size H	Size L	Weight	Count
10Hz @ -3dB	60kHz @ -3dB	EI96/59	W1 - 110 mm W2 - 110 mm W3 - 110 mm	H1 - 110 mm H2 - 110 mm	L1 - 110 mm L2 - 110 mm L3 - 110 mm L4 - 110 mm	3.5 kg	1
Price							
1-5 units		5+ units		10+ units		25+ units	
121.0 USD		115.0 USD		109.0 USD		103.0 USD	